

WEEKLY OPPORTUNITIES

Community Garden



**EVERY TUESDAY
DROP-IN BETWEEN
10-12:30PM OR 1-3:30PM**

Come along to learn more about growing food, how to cook using the freshest ingredients straight from the garden, use the pizza oven and cook outdoors, chat, take part in workshops, or simply enjoy the space!.

Creative Writing Group

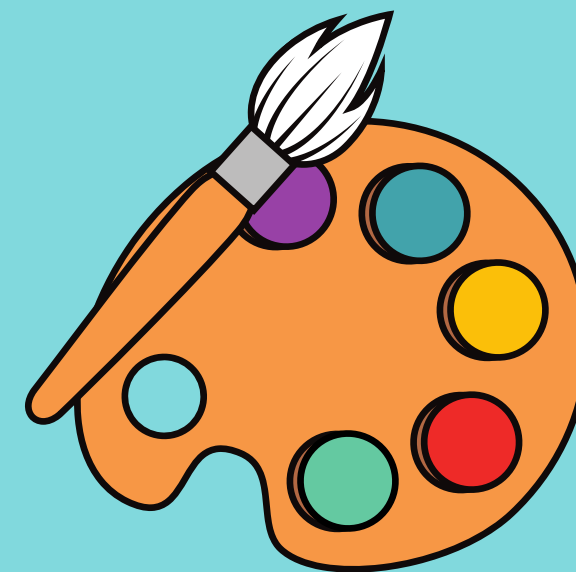


**EVERY SECOND WEDNESDAY
10AM-12PM
AT CASTLEMILK STABLES,
G45 0AZ**

Join us for a chat and share your stories/poems with us. No experience necessary.



Creative Castlemilk



**EVERY WEDNESDAY AT 12PM
AT THE COMMUNITY HUB IN
THE BRAES SHOPPING CENTRE**

A Community Artist will lead you, step by step, in the creation of a painting using acrylic paint on canvas. No previous experience is necessary and you will receive all the materials you need to take part .

Youth Advisory Group



**EVERY THURSDAY 4PM-6PM
AT CASTLEMILK STABLES**

This group is for anyone between 14-25 years old who would like to make a difference in their community. They develop ideas, projects as well as fundraise for youth trips for young people in Castlemilk.

**If you are interested in any of the above contact community@cassiltoun.org.uk
Message us on Facebook at Cassiltoun Housing Association or Castlemilk Park Project
or call 0141 634 2673**

CASTLEMILK PARK OPPORTUNITIES FOR ALL

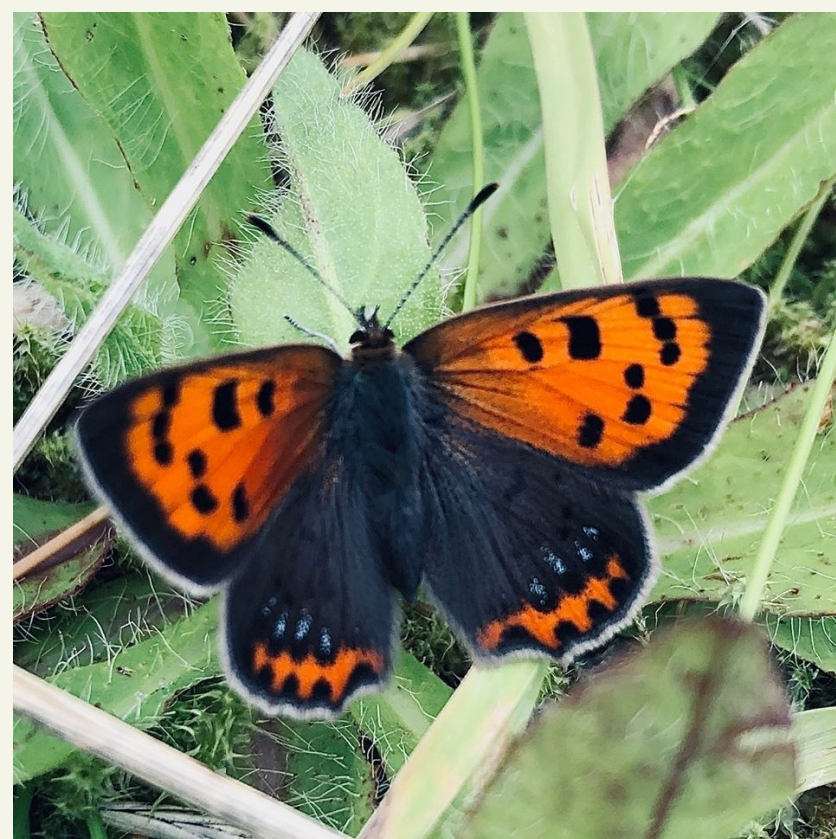
Woodland Volunteers



**TUESDAY, THURSDAY AND
FRIDAY - MEET AT CASTLEMILK
STABLES AT 10AM OR 2PM**

Castlemilk Park is a place for people to visit, enjoy and learn in. The volunteers help contribute by participating in tasks such as: Litter picking, removal of fly tipping, woodland thinning, path clearing and lots more!

Wildlife Photo Walks and Talks



**SECOND MONDAY OF THE
MONTH AT 1.30PM-
ONLINE USING ZOOM**

Come along and share photos and stories of nature and wildlife in your community. Guest speakers attend frequently and no experience is necessary.

Castlemilk Explorers



**FIRST SATURDAY OF THE
MONTH 10.30AM-12.30AM AT
CASTLEMILK STABLES, G45 0AZ**

Nature themed activities for 7-12 year olds. Materials for the sessions will be provided by post or collection, depending on restrictions.

"Look after your Woodland!"

**NONE OF THESE DAYS/TIMES
SUIT? DON'T WORRY YOU
CAN STILL PARTICIPATE IN
YOUR OWN TIME!**

Do you often go a walk in Castlemilk Park for your daily exercise? Why not help us look after our woodland by taking photographs of specific landmarks/trees/plants, write a small paragraph about it, participate in surveys such as butterflies surveys and loads more! To be part of this project please contact us.

**If you are interested in any of the above contact community@cassiltoun.org.uk
Message us on Facebook at Cassiltoun Housing Association or Castlemilk Park Project
or call 0141 634 2673**